

Results of the Transition/Assessment Team Phase 2 Survey

September 17, 2017 – October 1, 2017

Results

Summary

Demographics Questions

Proposal Questions

Additional Information

FAQ

Background Information

Fine Print



Results

Summary

Demographics Questions

Proposal Questions

Additional Information

FAQ

Background Information

Fine Print

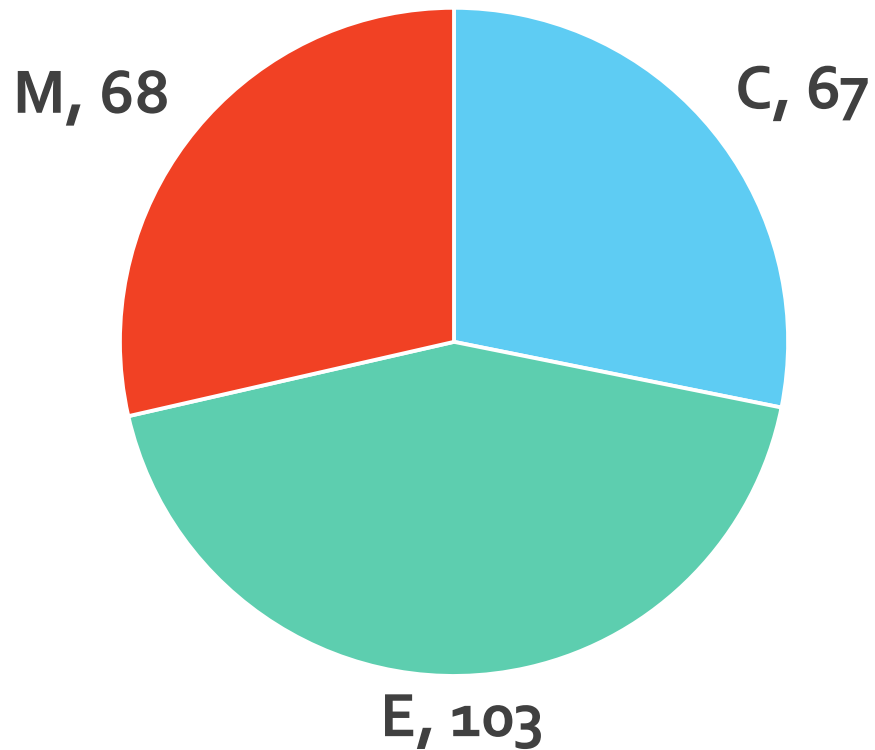
Summary

Most people agree
with the general principles
of the Transition/Assessment Team (TAT) model.

But many (~1 in 3) have questions/comments
about the specific implementation
of the model.

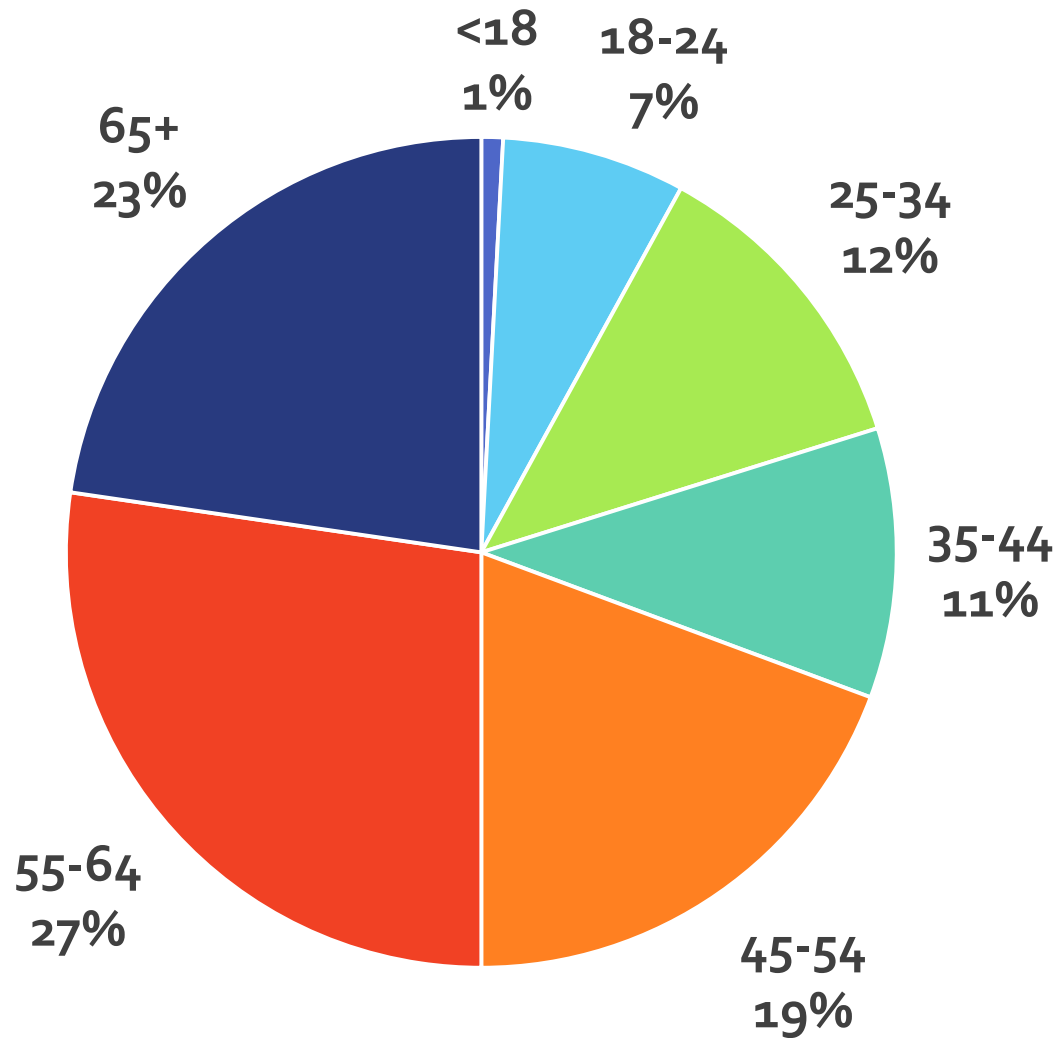
Demographics Questions

1. Which congregation?

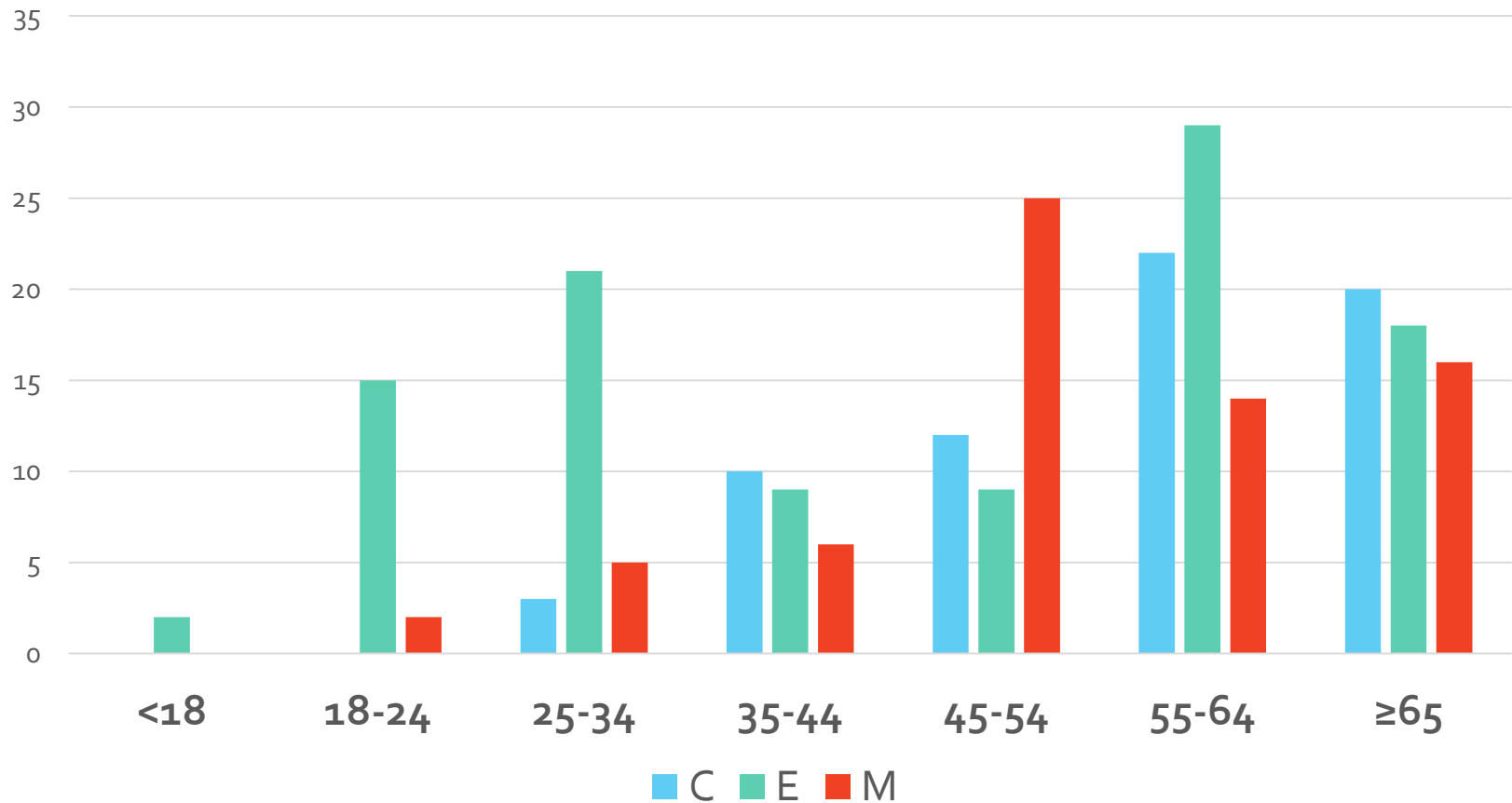


Total: 238 Responses

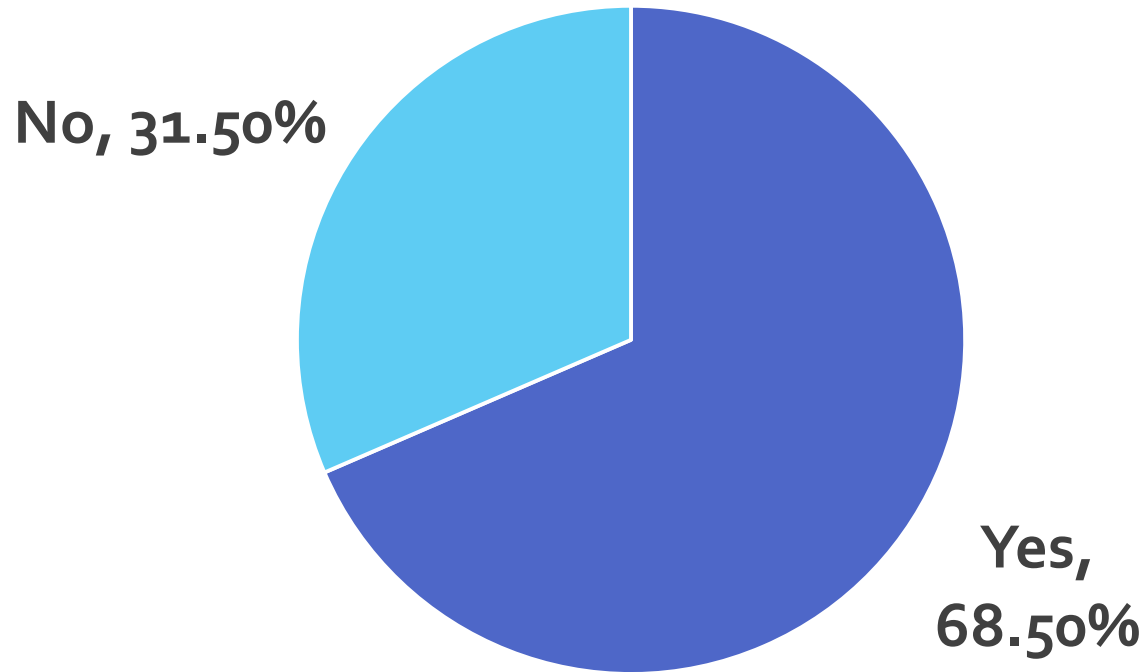
2. How old are you?



2. How old are you? [Detail]

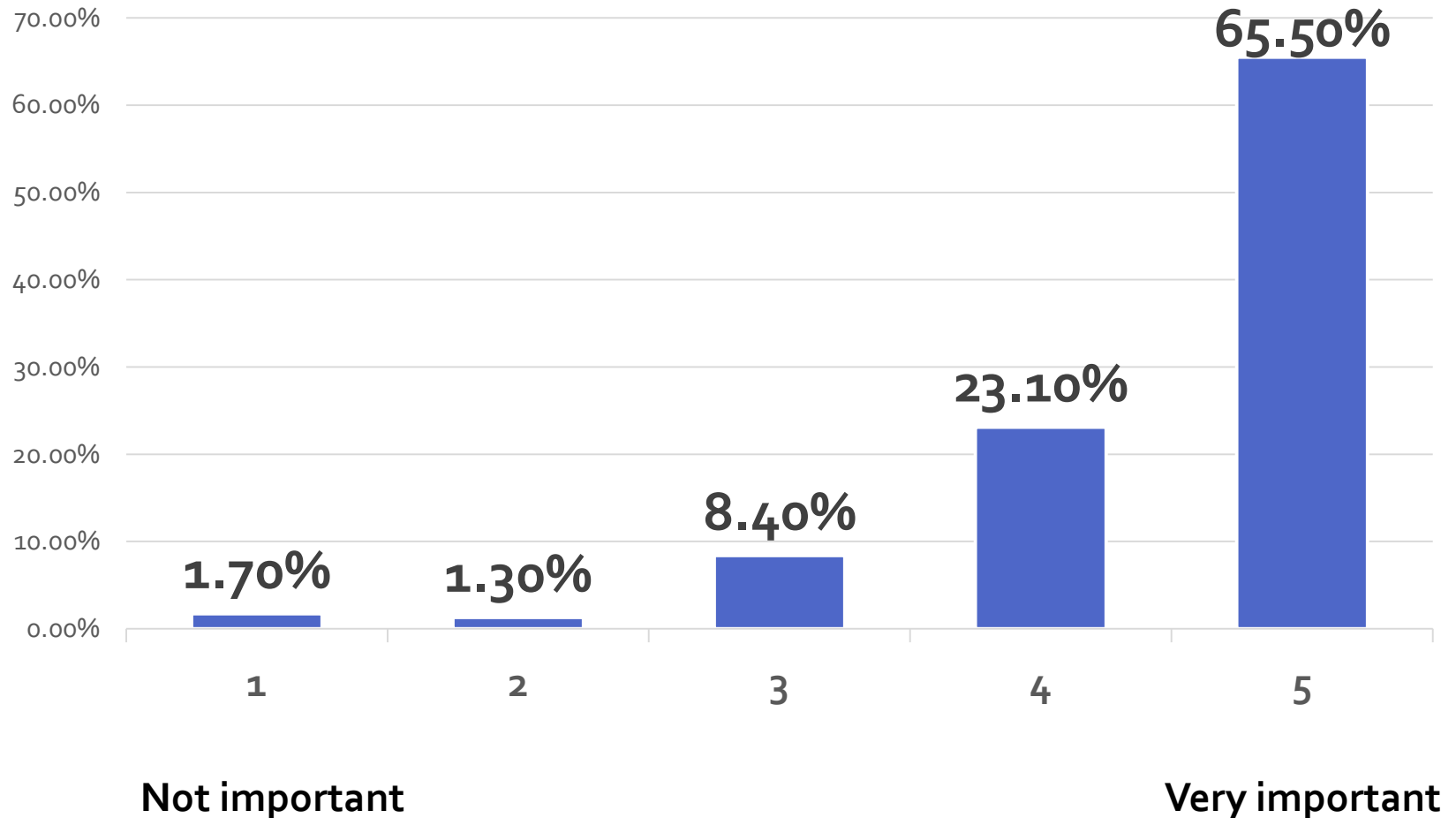


3. Are you a church member?

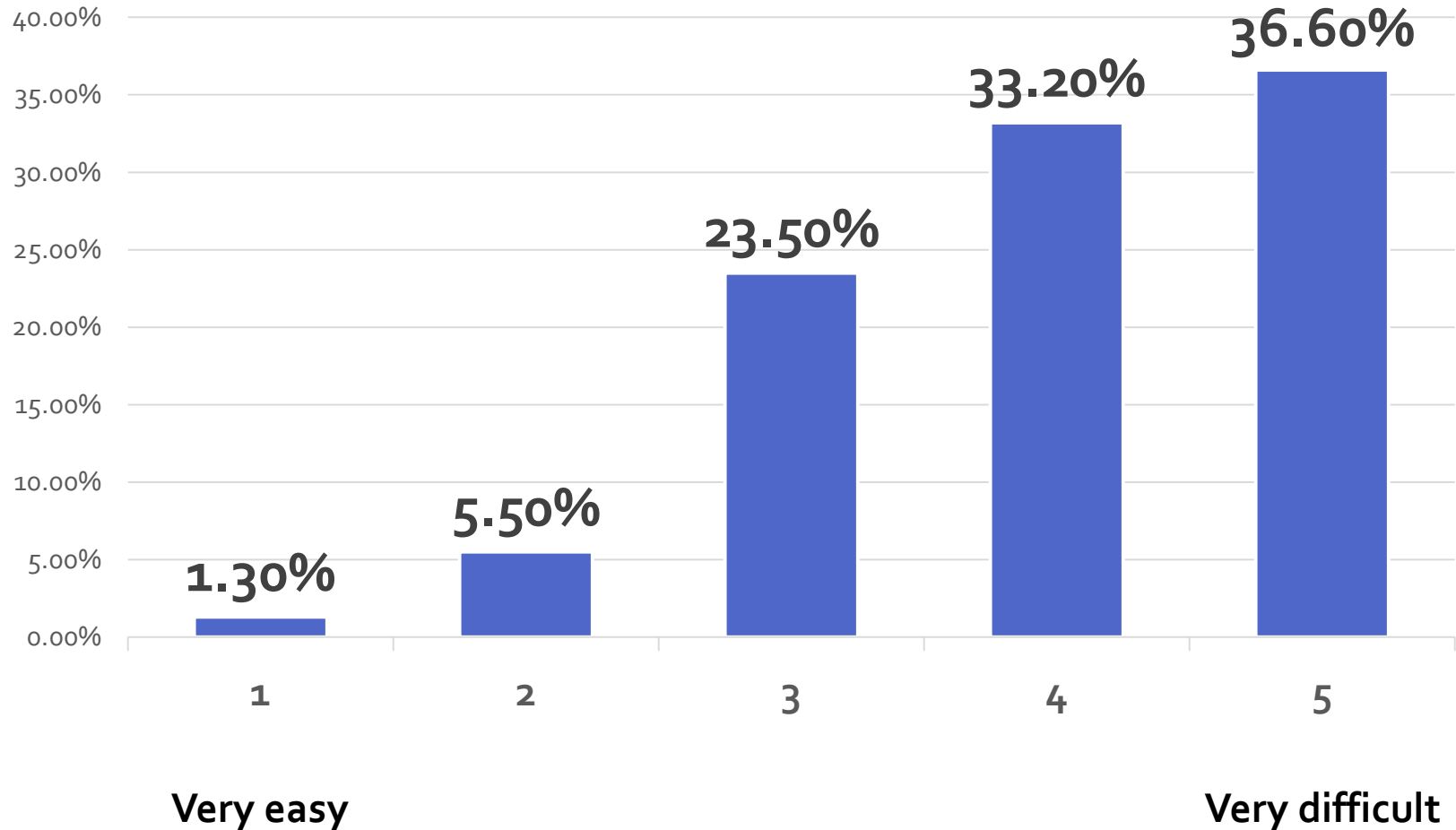


Proposal Questions

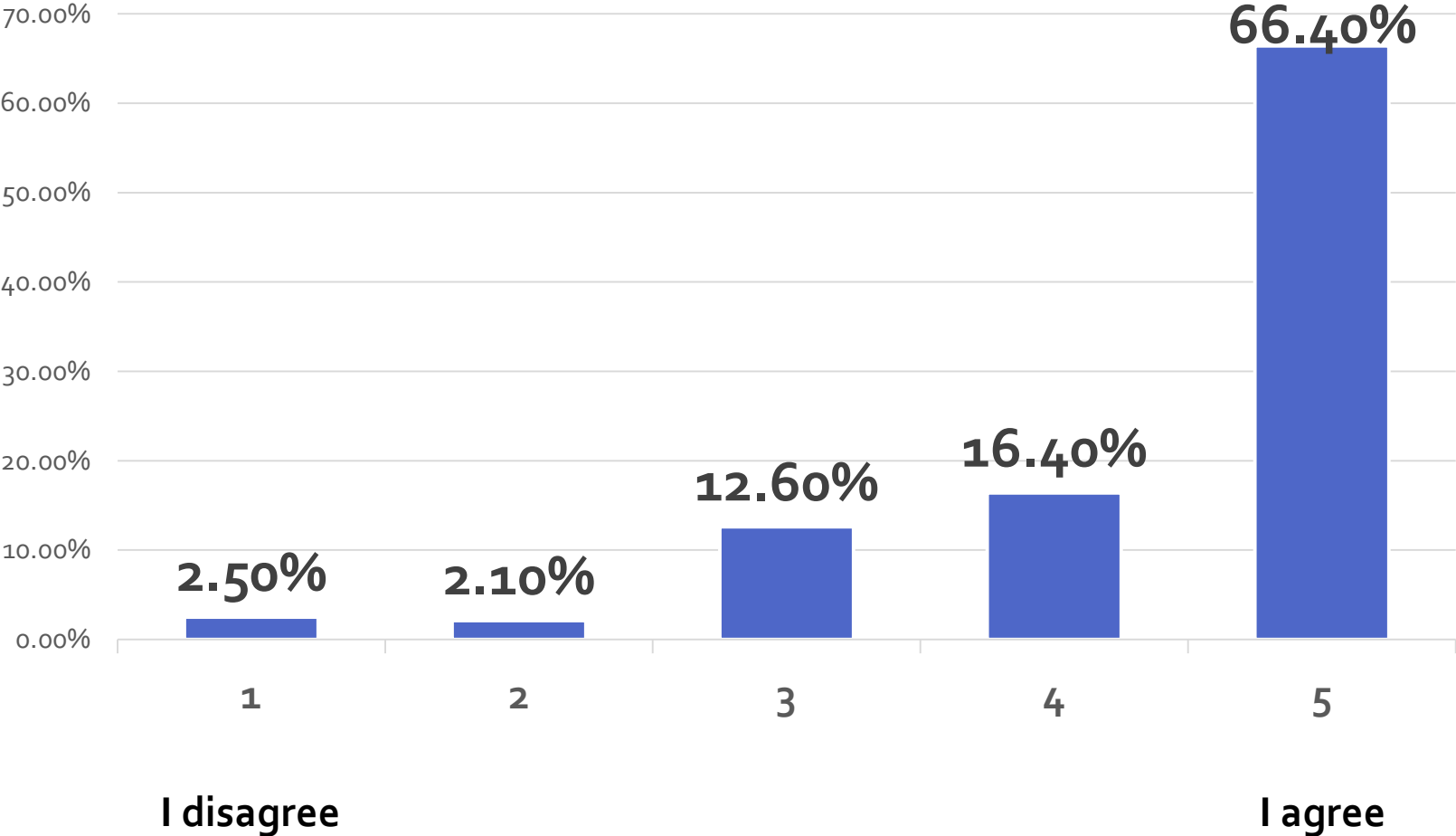
4. How important is it for a pastor to be fluent in the congregation's language?



5. How difficult is it for someone who isn't fluent to shepherd you?

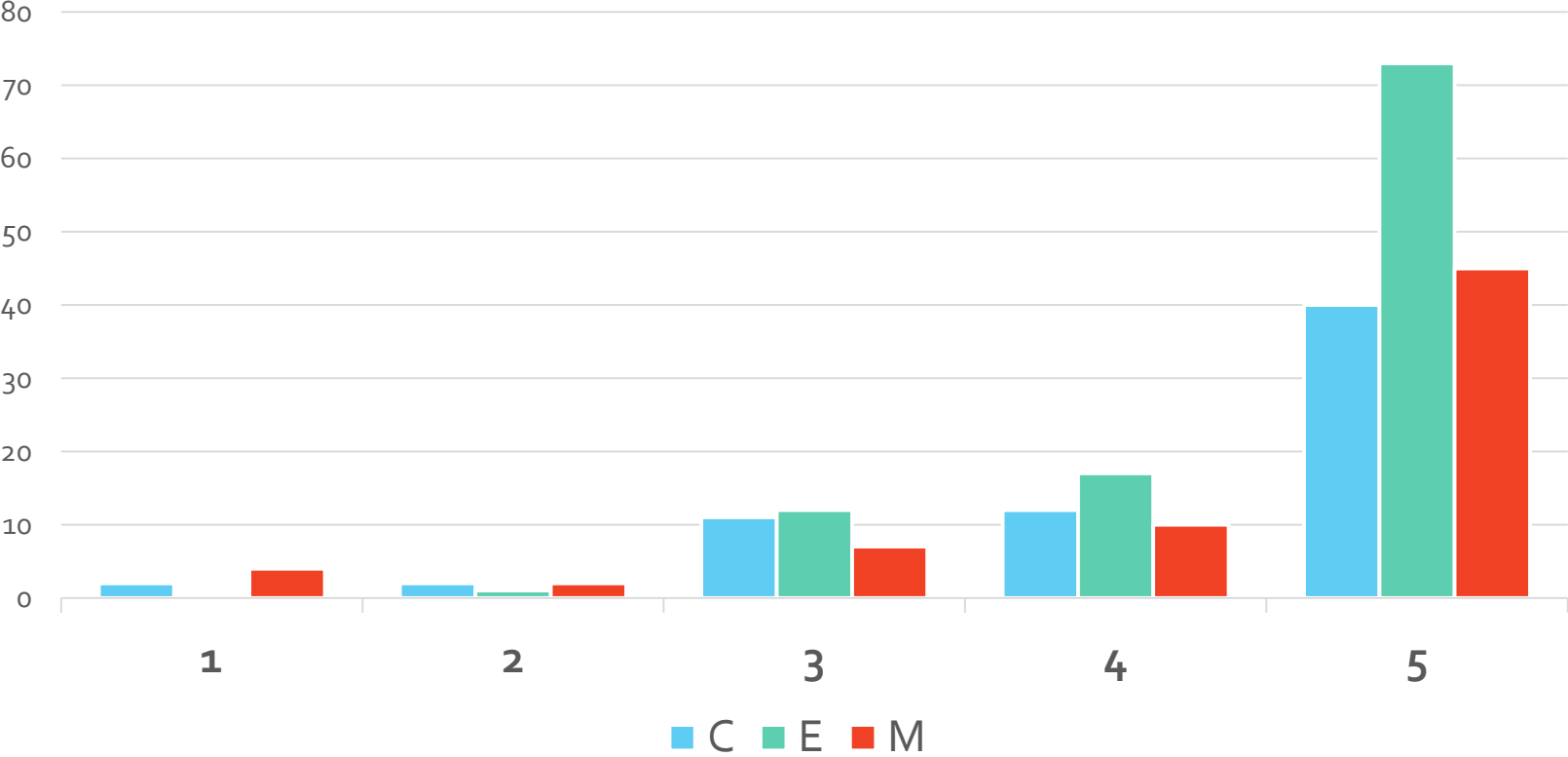


6. Does the New Testament depict churches being overseen by multiple “elders”?



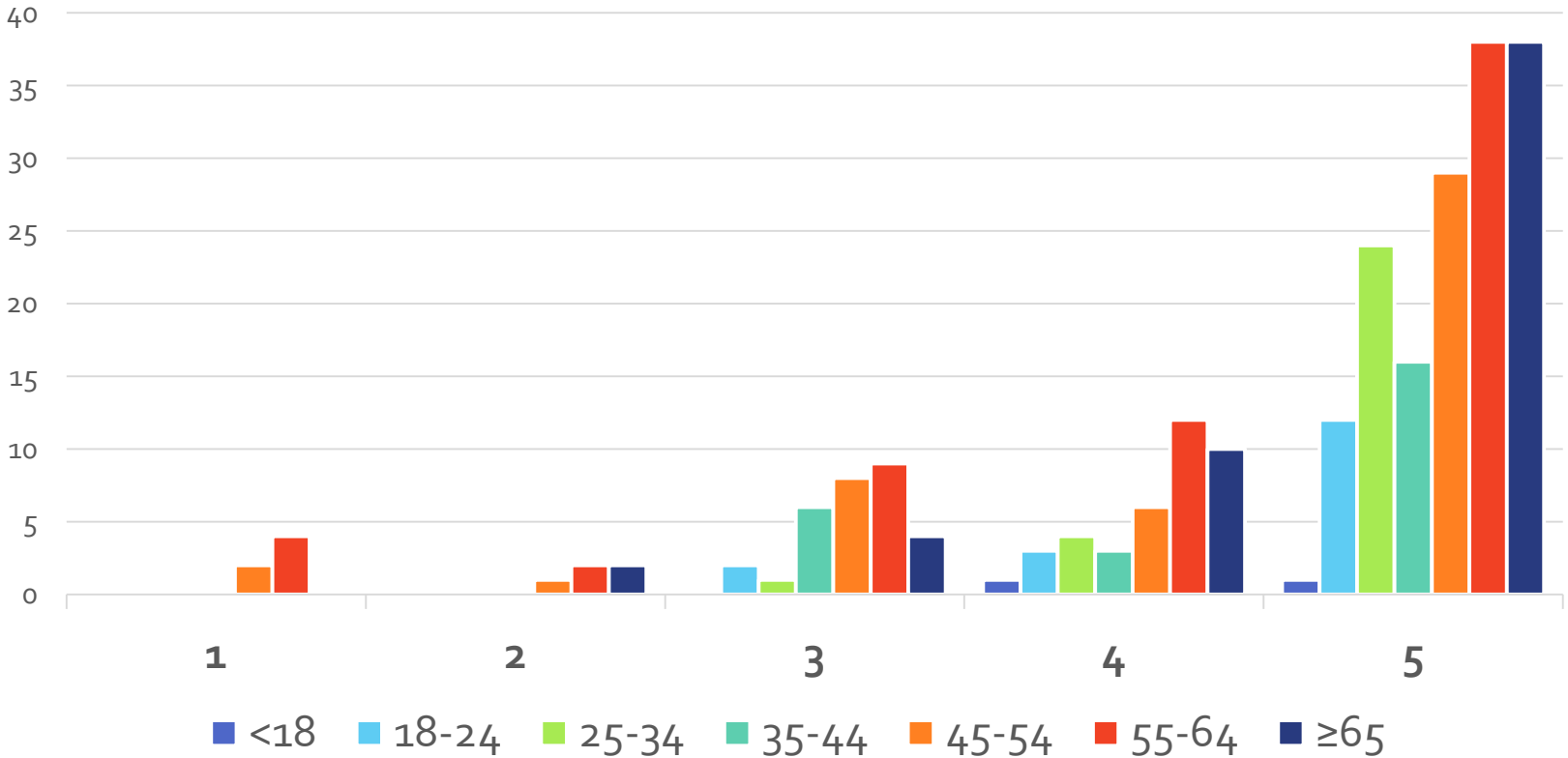
6. Does the New Testament depict churches being overseen by multiple “elders”?

[Detail: Sort by congregation]



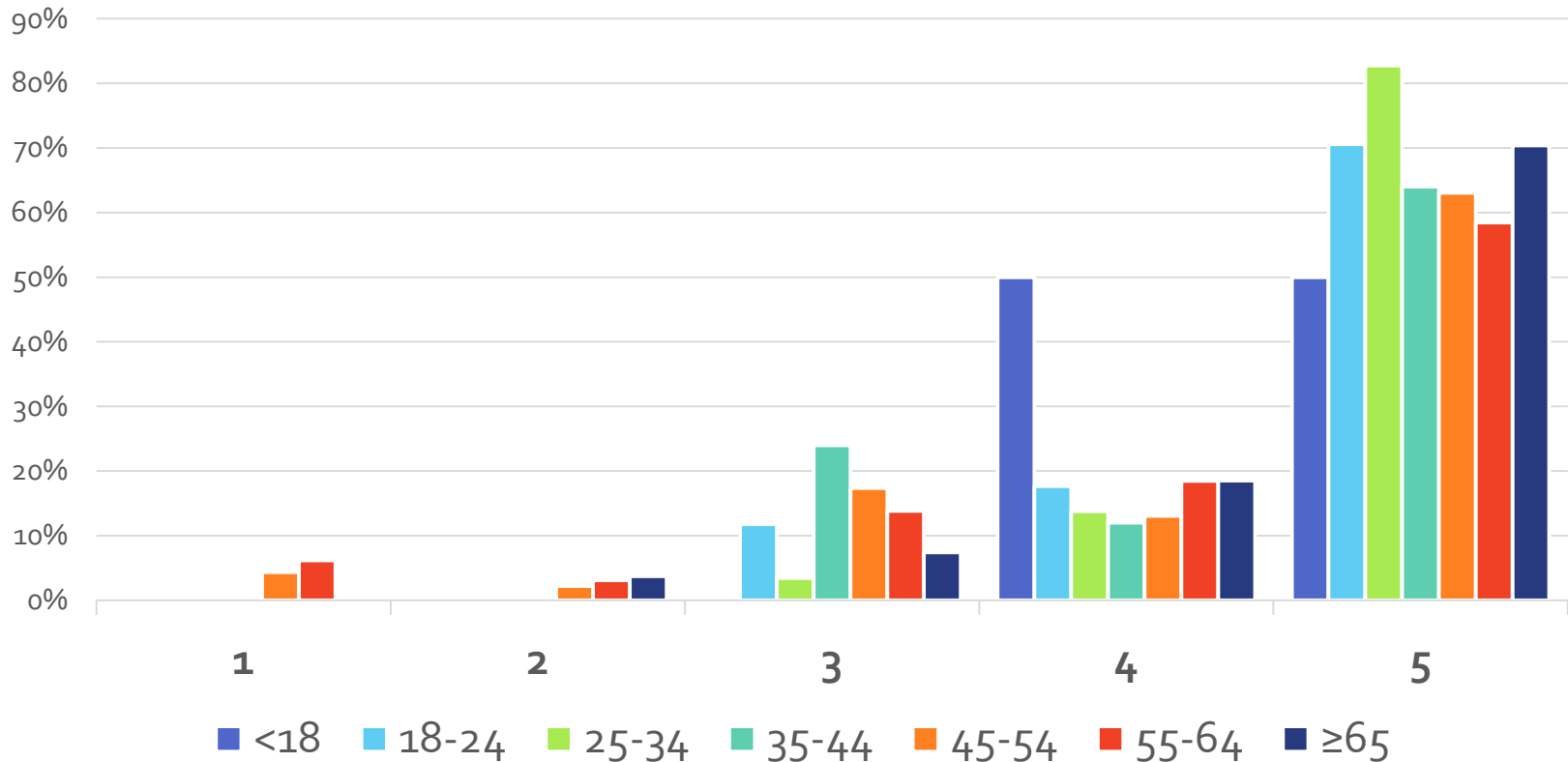
6. Does the New Testament depict churches being overseen by multiple “elders”?

[Detail: Sort by age, showing count]



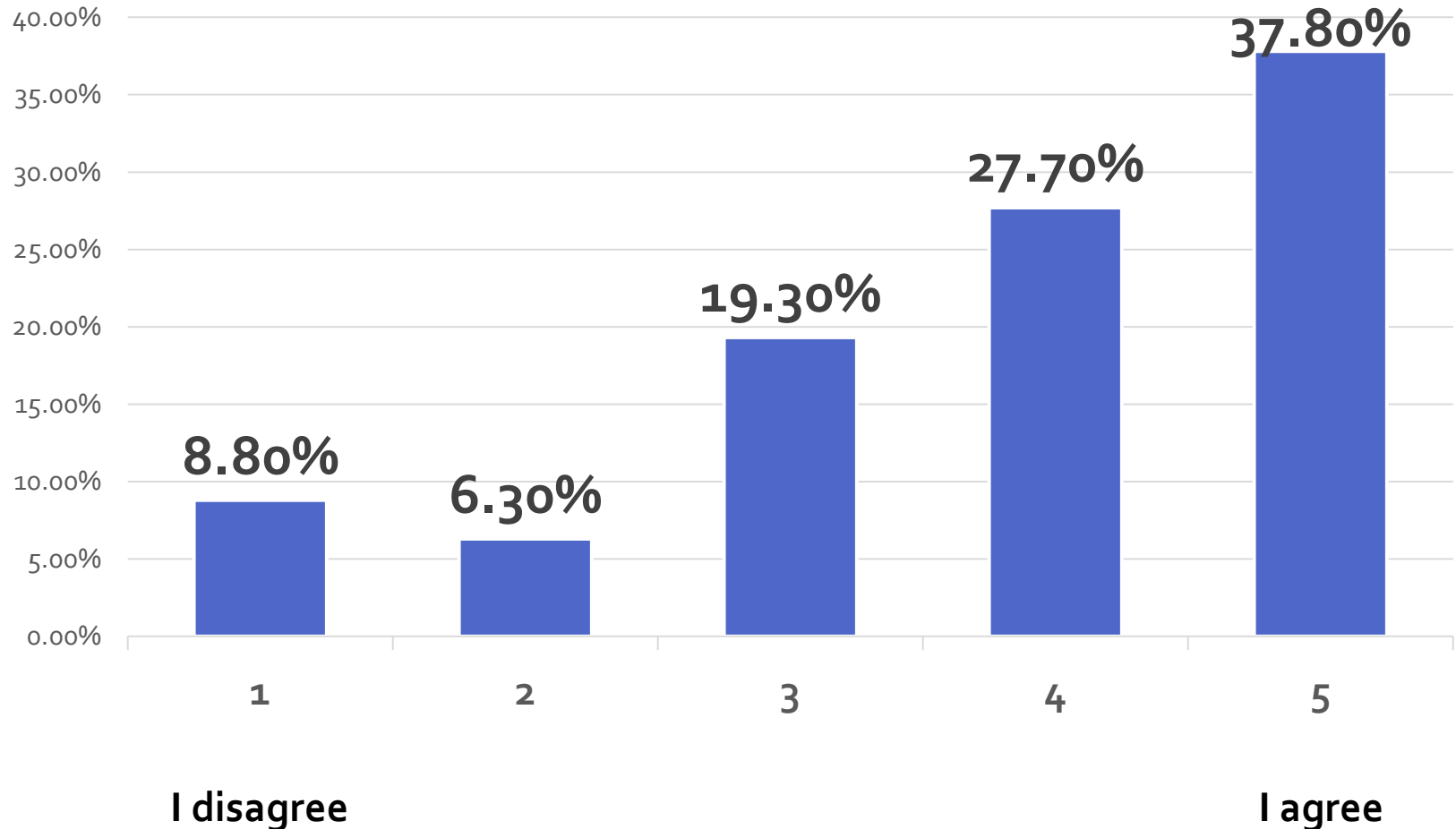
6. Does the New Testament depict churches being overseen by multiple “elders”?

[Detail: Sort by age, showing percentages of age groups*]

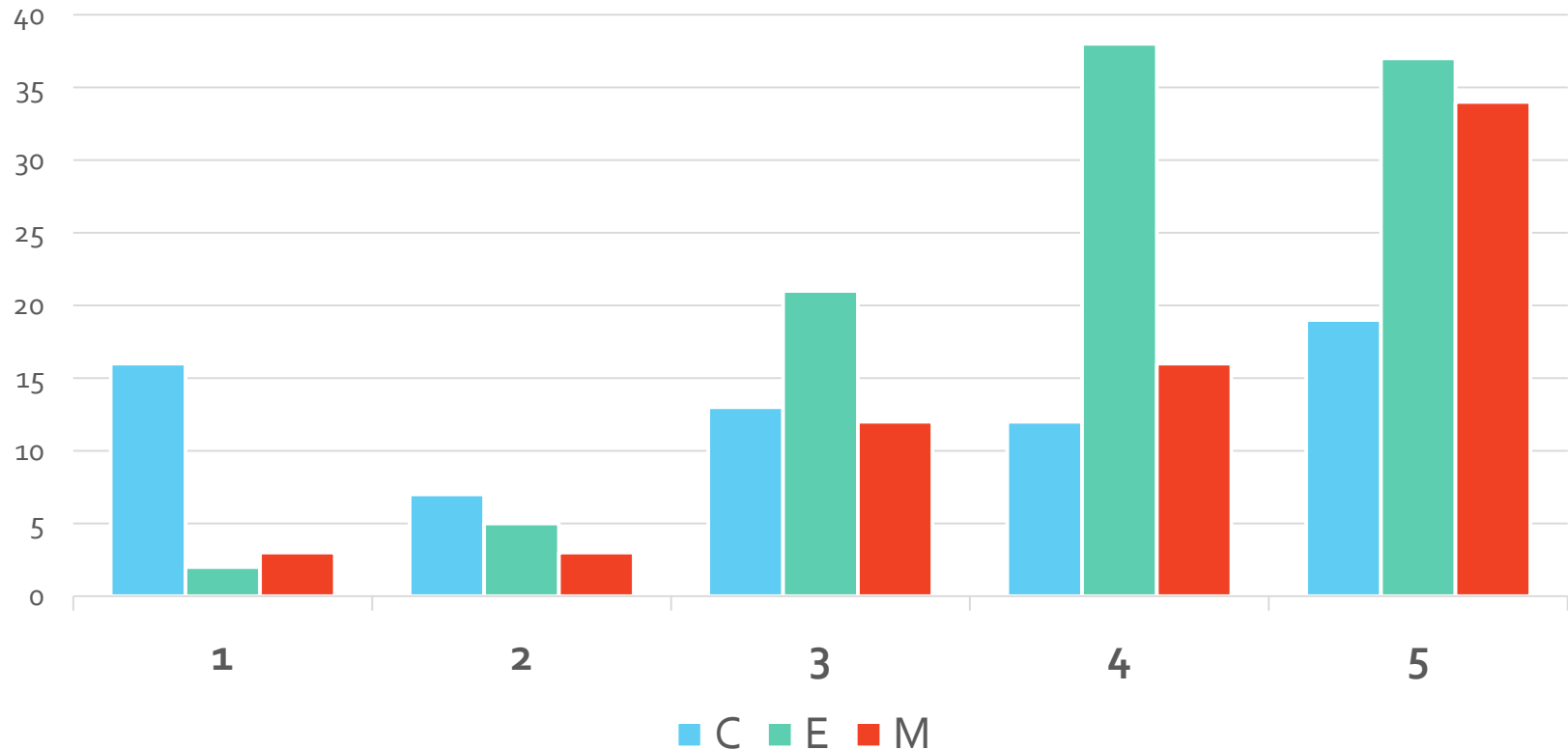


*For example, of those <18, 50% marked 4, and 50% marked 5.

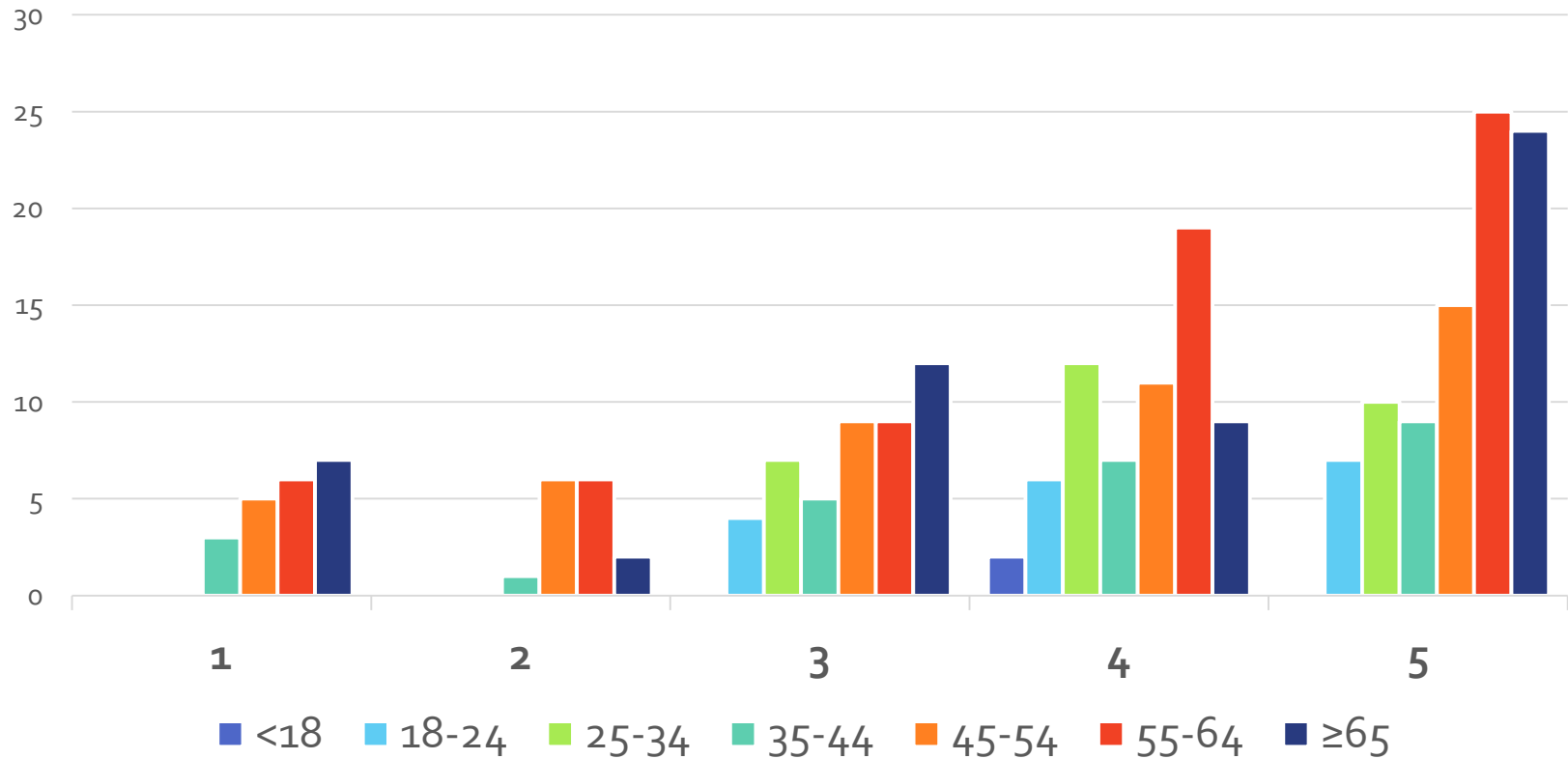
7. Are there men in your congregation currently ready/qualified to be lay elders?



7. Are there men in your congregation currently ready/qualified to be lay elders? [Detail: Sort by congregation]

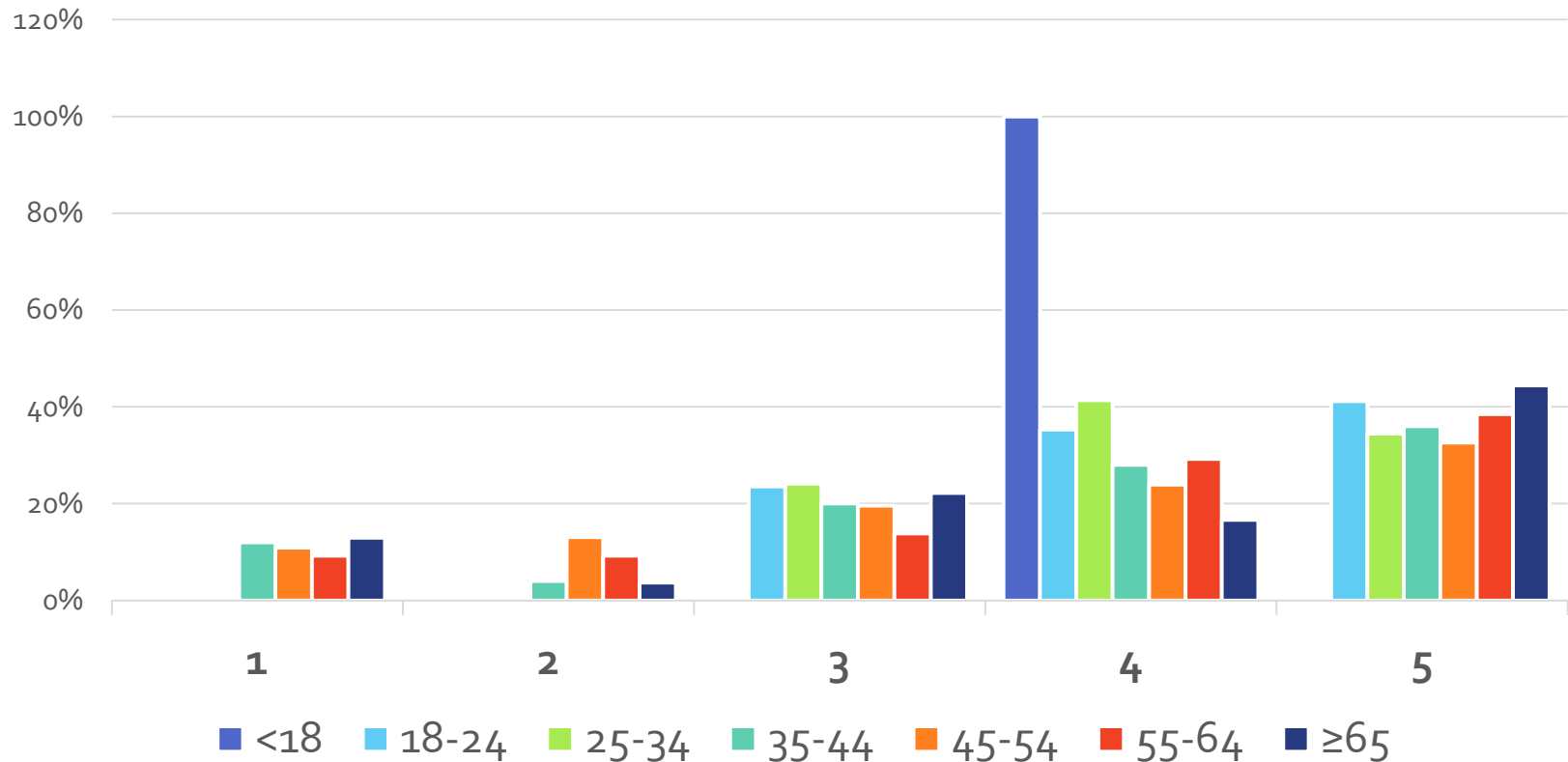


7. Are there men in your congregation currently ready/qualified to be lay elders? [Detail: Sort by age, showing count]



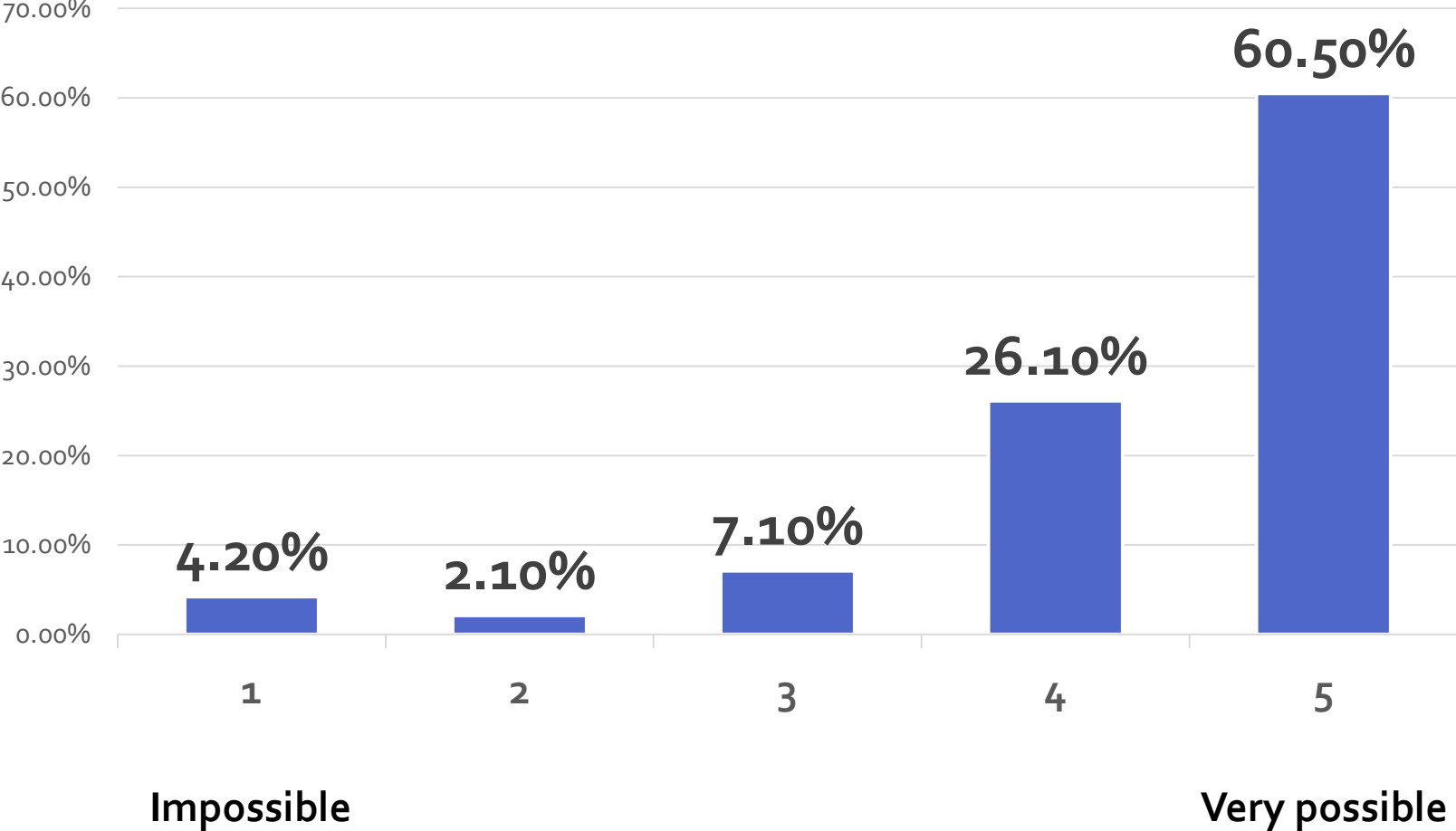
7. Are there men in your congregation currently ready/qualified to be lay elders?

[Detail: Sort by age, showing percentages of age groups*]

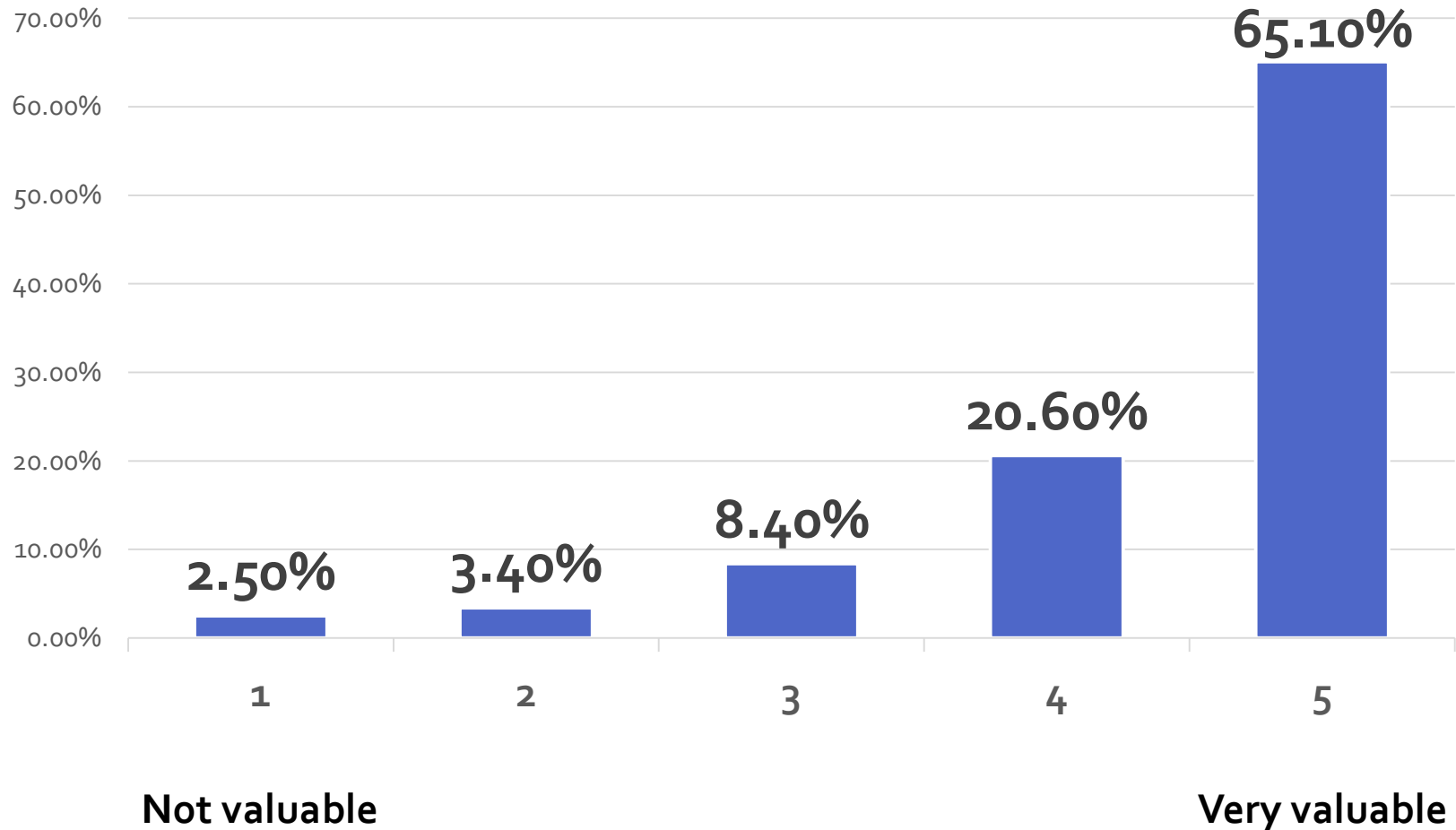


*For example, of those <18, 100% marked 4.

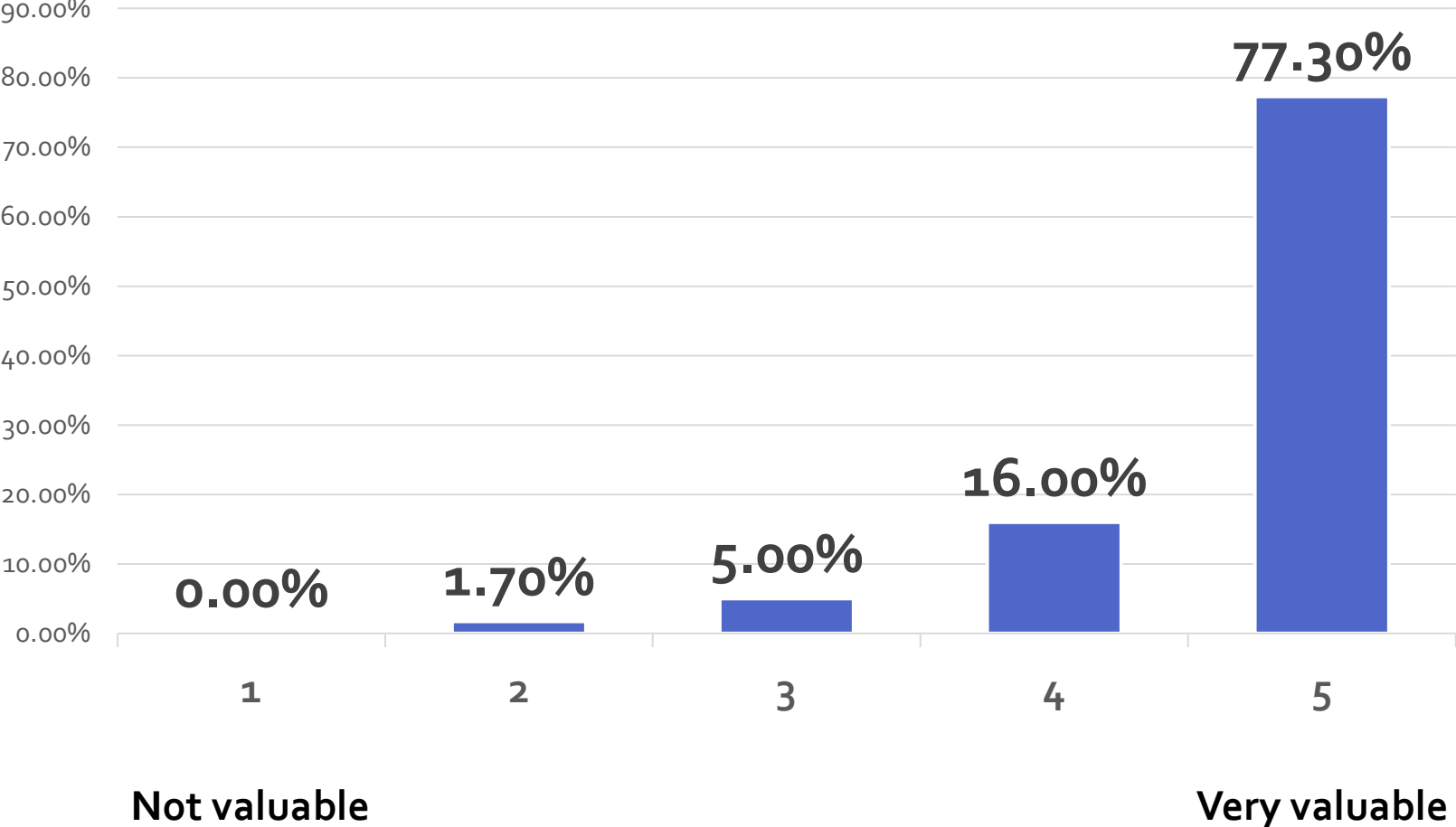
8. Can the congregations have unity (in doctrine and vision) without uniformity?



9. How valuable is it for the congregations to support each other in making disciples?



10. How valuable would it be for the three groups of elders to meet together?



Results

Summary

Demographics Questions

Proposal Questions

Additional Information

FAQ

Background Information

Fine Print

FAQ

FAQ (Frequently Asked Questions)
posted at [TATsurvey.com](https://www.tatsurvey.com).

Background Information

What was the purpose of this survey?

The purpose was to see if the church's thinking broadly matched the TAT's thinking on key areas of the TAT proposal.

How should I read these graphs?

In questions asking for a score from 1 to 5, higher scores (4's and 5's) usually show more agreement with the TAT proposal.

How long did this survey run?

It ran from September 17, 2017 – October 1, 2017, after TAT Town Hall meetings on September 17, 2017.

How were surveys submitted?

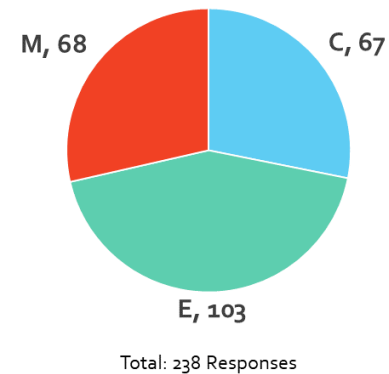
They were submitted at TATsurvey.com and via paper.

Fine Print

Question titles are simplified

- For simplicity, these slides contain shortened titles.
- For example, **“1. In which congregation do you normally worship on Sunday mornings?”** was shortened to **“1. Which congregation?”**

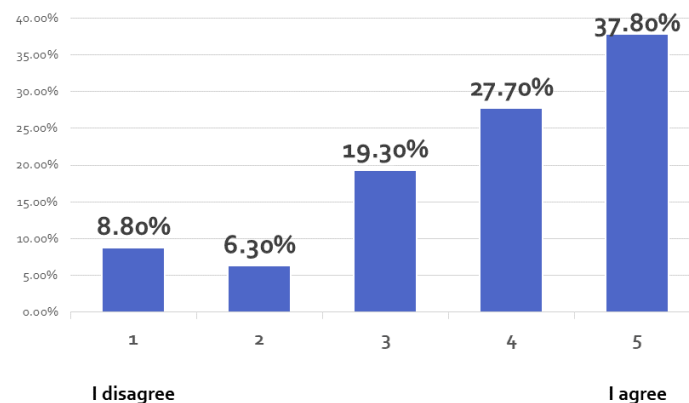
1. Which congregation?



Some neutral responses are inflated

- On the paper surveys, a few people left some rankings blank.
- But on the online survey, the system wouldn't allow for blank rankings.
- So we marked all blanks as 3's (neutral).

7. Are there men in your congregation currently ready/qualified to be lay elders?



Why are some slides broken down by congregation/age?

- When congregations answered similarly (this was usual), graphs *are not* broken down by congregation.
- When congregations answered differently (this was not usual), graphs *are* broken down by congregation.
- Exception: The graphs are broken down by congregation/age on selected other questions, especially regarding elders.

7. Are there men in your congregation currently ready/qualified to be lay elders?
[Detail: Sort by congregation]

